



Date:	23.05.2004
Dept.:	M-MB
Author:	Steffen Graf
© DÜRKOPP ADLER AG	

Manual

PC-Software MemoDongle

Table of contents

- Table of contents 2**
- 1. General 3**
 - 1.1 System requirements 3
 - 1.2 PC Software DongleCopy 3
 - 1.3 MemoDongle 3
- 2. Installation of DongleCopy 4**
 - 2.1 Downloading the “DongleCopy.exe” from the Internet 4
 - 2.2 Extracting the file DongleCopy.exe 4
 - 2.3 Installation PC-Software DongleCopy 5
- 3. Manual DongleCopy 6**
 - 3.1 MemoDongle Description 6
 - 3.2 Reading the Information from the MemoDongle 7
 - 3.3 Display the information about the file content 7
 - 3.4 Display the information about the content of the MemoDongle 8
 - 3.5 Error messages 9
- 4. Creating a MemoDongle 10**
 - 4.1 Program Internet-Download : 10
 - 4.2 Writing the MemoDongle 11
 - 4.3 Loading the program in the DAC3-Control unit via the MemoDongle 12

1. General

Every machines equipped with the DACIII control can be updated through the MemoDongle. The MemoDongle can be described using the PC Software DongleCopy.

1.1 System requirements

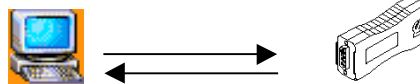
In order to run the PC Software DongleCopy, your system must fulfill at least the following requirements

- Pentium 200 MHz or higher
- Microsoft Windows 98SE or later
- A free COM serial port

1.2 PC Software DongleCopy


The PC Software DongleCopy is an user-friendly application allowing the reading and writing of the machine data like the software and data (free contour) from the storage medium **MemoDongle**.

Possibility of the DongleCopy




1.3 MemoDongle

The MemoDongle is a serial 1MB storage unit and contains a so-called Flash-Memory allowing to keep the information without needing a battery. It will be read/written through the COM-port of the computer.

	<p>Important!! The MemoDongle is not a memory storage commercially available. The MemoDongle can be bought at the sales points of DÜRKOPP-ADLER AG under the following parts numbers: 9835 901005.</p>
---	---



Parts No. 9835 901005

	<p>Important!! It is not necessary to install a driver in order to use the MemoDongle. The COM-ports of the computer will be scanned.</p> <p>Important!! With notebooks without serial port an USB – serial adapter will be needed. A manufacturer driver specific for the adapter is necessary.</p>
---	--

2. Installation of DongleCopy

2.1 Downloading the “DongleCopy.exe” from the Internet

You can save programs or data e.g. free contours on the MemoDongle. The data needed must be beforehand available in a folder on the computer.

- Open our homepage: <http://www.duerkopp-adler.com>
- Choose your language by clicking “**Select language**”
- Go to the “**Download Area**”
- Select “**Software**”
- In the section “**Tool-Software**” select the file “**DongleCopy.exe**”
- Click on the hyperlink “**DongleCopy.exe**”
- Specify a location for the new file, for example **C:\My Documents** and wait until the data transfer is completed.

2.2 Extracting the file DongleCopy.exe

- Select the file through the “**Windows-Explorer**” or “**My Computer**”, right-click the file, and select “**Extracting**”.
The files will then be copied to the folder: “**C:\DongleCopy_Install**”
- Click “**OK**” to confirm the successful extraction of the files.
- Close the “**Self-Extractor**” window by clicking the “**Close**”

2.3 Installation PC-Software DongleCopy

- Launch your Windows-Explorer and go to the folder “C:\DongleCopy_Install”
- Double-click the file “**Setup.exe**” to start the installation program.
- Accept the Copyright by clicking “**Next**”.
- Confirm the installation folder by clicking “**Next**”.
 - If you need to use another installation folder (for example when installing a new version) click “**Browse**” and specify the new location.
 - In case the storage location has to be changed (not recommended), double-click the folder in the folder list until the new folder appears and select the new folder name.
 - Confirm by clicking “**OK**”
 - If the folder name does not exist, you will be asked whether the folder should be created. Please confirm by clicking “**YES**”.
- Confirm the program folder by clicking “**Next**”.
 - It is recommended a specific folder name in case you have more than one version of DongleCopy for example: DongleCopy 2.5
- Confirming the installation configuration by clicking “**Next**” will launch the installation process.
- The installation will take approx. 1 minute. Confirm the installation of the software by clicking “**Finish**”.

3. Manual DongleCopy

3.1 MemoDongle Description

You can save programs or data e.g. free contours on the MemoDongle. The data needed must be beforehand available in a folder on the computer.

- Click **“Writing the MemoDongle”**
- Double-click the folder in the folder list, until the folder with the needed file is opened.
Double-click the file to be opened or right-click the file and select **“Open”**.
- Plug the MemoDongle to the COM port of the computer.
Confirm by clicking **“OK”**.
- The machine will scan all COM ports of the computer to find a MemoDongle.
If a MemoDongle is found and it contains data, the header content will be displayed.

Memory Format

Format ID = Shows whether the file owns a formatted header.
Type = Shows whether the file is a program or a data for example: free contours.

Memory Content

Dongle Description = Shows whether the file is a component of the Software (Boot) or it contains data (Memo).

Machine Class = Machine Class Allocation

Machine Subclass = Subclass Allocation

Version = Displaying the Software version (only during the Boot sequence)

Date = Creation date of the file

Confirm with **“OK”**.

- Confirm whether the file on the MemoDongle is to be deleted or not.
 - Yes** = The content of the MemoDongle will irrevocably deleted.
The new files will then be copied to the MemoDongle.
 - No** = The content of the MemoDongle will remain unchanged.
There will be no new file(s) copied to the MemoDongle.
The process will be cancelled.



Caution !!

Depending on the volume of the file transfer, the copy process can take up to 20 minutes.

The copy process has come to the end when the information **“Dongle is ready”** is displayed.

- Clicking **“OK”** will take you to the main menu again.

3.2 Reading the Information from the MemoDongle

All information saved on the MemoDongle, programs or data, can be memorized on the computer.

- Click the “**Read MemoDongle**”
- Double-click the folder in the folder list, until the folder with the needed file is opened.
Double-click the file to be opened or right-click the file and select “**Save**”.
- Plug the MemoDongle to the COM port of the computer.
Confirm by clicking “**OK**”.
- The machine will scan all COM ports of the computer to find a MemoDongle.

If a MemoDongle is found, all information on the MemoDongle will be saved in the computer as files.

3.3 Display the information about the file content

Every files of a program or data of free contours are tagged provided with a header.

With the function “**Read File Info**” it is possible to get the information about the content of a file in the computer with the extension .DNG.

- Click “**Read file Info**”
- Double-click the folder in the folder list, until the folder with the needed file is opened.
Double-click the file to be opened or right-click the file and select “**Open**”.



Note !!

Only the files with the extension .dng will be shown.
The file extensions may vary with the free contours and can eventually not be shown.
You must then under “Files of type” choose the option “All”.

- The header information of the selected file will be shown.

Memory Format

Format ID = Shows whether the file owns a formatted header.

Type = Shows whether the file is a program or a data for example: free contours.

Memory Content

Dongle Description = Shows whether the file is a component of the Software (Boot) or it contains data (Memo).

Machine Class = Machine Class Allocation

Machine Subclass = Subclass Allocation

Version = Displaying the Software version (only during the Boot sequence)

Datum = Creation date of the file

- Clicking “**OK**” will take you to the main menu again.

3.4 Display the information about the content of the MemoDongle

Every files of a program or data of free contours are tagged provided with a header.

With the function “**Read MemoDongle Info**“ it is possible to get the information about the content of a file in the MemoDongle.

- Click “ **Read MemoDongle Info**“
- Plug the MemoDongle to the COM port of the computer.
Confirm by clicking “**OK**“.
- The machine will scan all COM ports of the computer to find a MemoDongle.

The header content of the MemoDongle will be displayed.

Memory Format

Format ID = Shows whether the file owns a formatted header.

Type = Shows whether the file is a program or a data for example: free contours.

Memory Content

Dongle Description = Shows whether the file is a component of the Software (Boot) or it contains data (Memo).

Machine Class = Machine Class Allocation

Machine Subclass = Subclass Allocation

Version = Displaying the Software version (only during the Boot sequence)

Datum = Creation date of the file

- Clicking “**OK**“ will take you to the main menu again.

3.5 Error messages

Error messages	Descriptions	Remedy
Could not read the binary file!	= Could not read the Binary File.	- The .dng files should not have the attribute write-protected! - With Windows XP the folder must be on C:\; it should not be in the folder "My Document"
Could not open the binary file!	= Could not read the Binary File	- The .dng files should not have the attribute write-protected! - With Windows XP the folder must be on C:\; it should not be in the folder "My Document"
Could not write the binary file!	= Could not write the Binary File	- The .dng files should not have the attribute write-protected! - With Windows XP the folder must be on C:\; it should not be in the folder "My Document"
Could not read the Dongle!	Breaking the reading process of the MemoDongle	- Check whether the dongle is properly plugged to the COM port
MemoDongle is not satisfactory !	= Memory Content Dongle does not match the memory content of the source file	Create the Dongle again
MemoDongle empty test not satisfactory !	= the dongle still contains data	Create the Dongle again
MemoDongle not found!	= no Dongle found	- Check whether the dongle is properly plugged in - Use other COM-ports
MemoDongle programmation not satisfactory !	= error occurred during program copy	- Create the Dongle again - Eventually Dongle out of order
Timeout while erasing the MemoDongle !	= error occurred during the Dongle erasing	- Create the Dongle again - Eventually Dongle faulty

Information	Description	Remedy
Do not use the MemoDongle to boot the Machine!	= Dongle content corrupted, the Dongle should not be used to boot the Machine	- Create the Dongle again - Switch off the screen saver - do not use TSR (terminate and stay resident) programs reducing significantly the amount of memory available during the writing process - Shutdown your anti-virus.

4. Creating a MemoDongle

4.1 Program Internet-Download :

- Open our homepage:
<http://www.duerkopp-adler.com>
- Choose your language by clicking "**Select language**"
- Go to the "**Download Area**"
- Select "**Software**"
- Select the section "**Tool-Software**"
- Click the program file needed.
for example 510_000_A043_140803.DNG

The Menu "Downloading file" appears.

File name structure

510_ 000_ A043_ 140803 .DNG

Machine Class Subclass Software version for example A 4.3 Creation date Extension



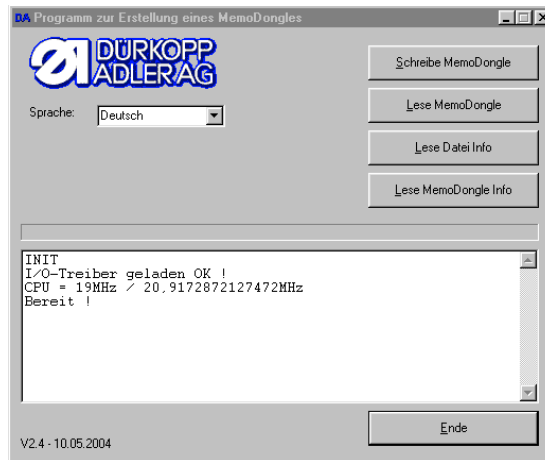
Important!

Only files with the extension .DNG can be read with the DongleCopy Software.

- When clicking "**Save**" the menu "**Save as**" appears
- Specify a location and click "**Save**" to start the download process.
- Terminate your Internet connection.

4.2 Writing the MemoDongle

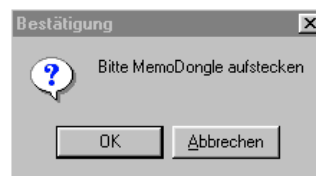
- Launch the PC Software “DongleCopy“
- Click “Writing the MemoDongle“



- Select the corresponding file and click “Open”

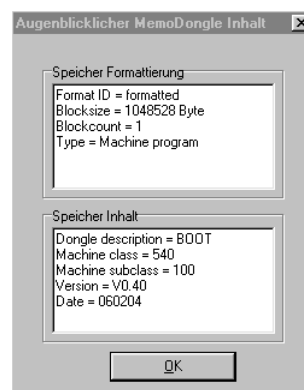


- Plug the MemoDongle in the serial interface and confirm by clicking “OK”

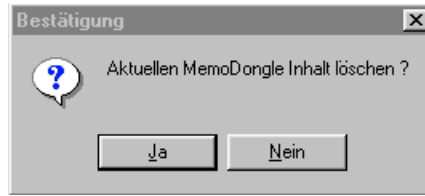


The program will scan the serial ports of the PC.

- If the MemoDongle contains data, the information will be displayed. Confirm by clicking “OK”.




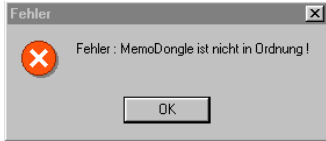
- If you want to overwrite the data, confirm by clicking **“Yes”**. If not, the process can be canceled by clicking **“No”**.



- If the Dongle is successfully programmed, the information **“MemoDongle is ready”** appears. Confirm by clicking **“OK”**.




The programming of the MemoDongle can last up to 20 minutes, depending on the program size.

	<p>Caution! In case the message “MemoDongle not satisfactory !” occurs, the Dongle should not be used for booting the machine.</p> <div style="text-align: center;">  </div>
--	---

- To close the program **“DongleCopy”** click **“End”**.
- Remove the Dongle from the COM–port of the PC or Notebook.

4.3 Loading the program in the DAC3-Control unit via the MemoDongle

	<p>The procedure is different for each machine class and control panel type.</p> <p>Please follow the procedure described in each installation and operating instructions corresponding to the machine class.</p>
---	---